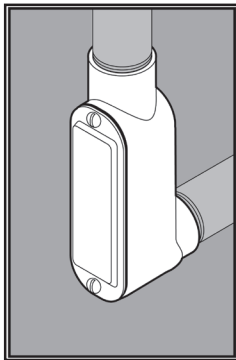
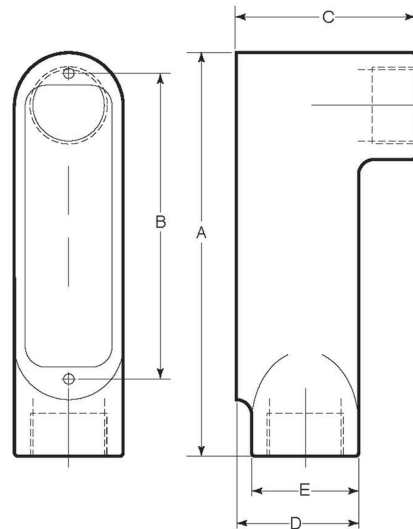


STAINLESS STEEL LB CONDUIT BODIES



APPLICATION

- Designed to make 90° bends, change the route of conduit, and/or to make wiring pulls and connections
- Flat back design provides extra wiring capacity
- Form 8
- Offered in seven configurations: C, LB, LL, LR, T, TB, X
- Supplied complete with cover, gasket and Type 316 SS screws
- Manufactured in stainless steel to help prevent corrosion
- Can be installed using ordinary hand tools and require little maintenance or repair
- Provided in a bright, polished finish that does not require touch up or painting



PRODUCT DETAILS

Material:

- Body: CF8M (316 SS)
- Cover, Screws: 316 SS
- Gasket: Neoprene

Standards:

ASTM A351, ASTM A240,
ASTM F593

Country of Origin:

100% Made in USA

UL File Number:

QCIT.E300676
(Standard 514A)

Canada UL File Number:

DWTT7.E300676
(Standard 514A)

| Part Number | Conduit Size | Weight/ Each (lbs.) | Dimension (in.) | | | | |
|-------------|--------------|---------------------|-----------------|-------|------|------|------|
| | | | A | B | C | D | E |
| 7050LB | ½ in. | 1 | 4.85 | 3.50 | 2.10 | 1.38 | 1.19 |
| 7075LB | ¾ in. | 2 | 5.72 | 4.31 | 2.50 | 1.63 | 1.50 |
| 7100LB | 1 in. | 3 | 6.48 | 5.00 | 2.83 | 2.00 | 1.75 |
| 7125LB | 1-¼ in. | 5 | 7.75 | 6.00 | 3.50 | 2.50 | 2.13 |
| 7150LB | 1-½ in. | 5 | 8.38 | 6.56 | 3.75 | 2.75 | 2.31 |
| 7200LB | 2 in. | 9 | 10.50 | 8.50 | 4.38 | 3.38 | 2.75 |
| 7300LB | 3 in. | 18 | 13.50 | 11.25 | 6.13 | 4.63 | 4.00 |
| 7400LB | 4 in. | 28 | 16.63 | 13.75 | 7.25 | 5.63 | 5.13 |

